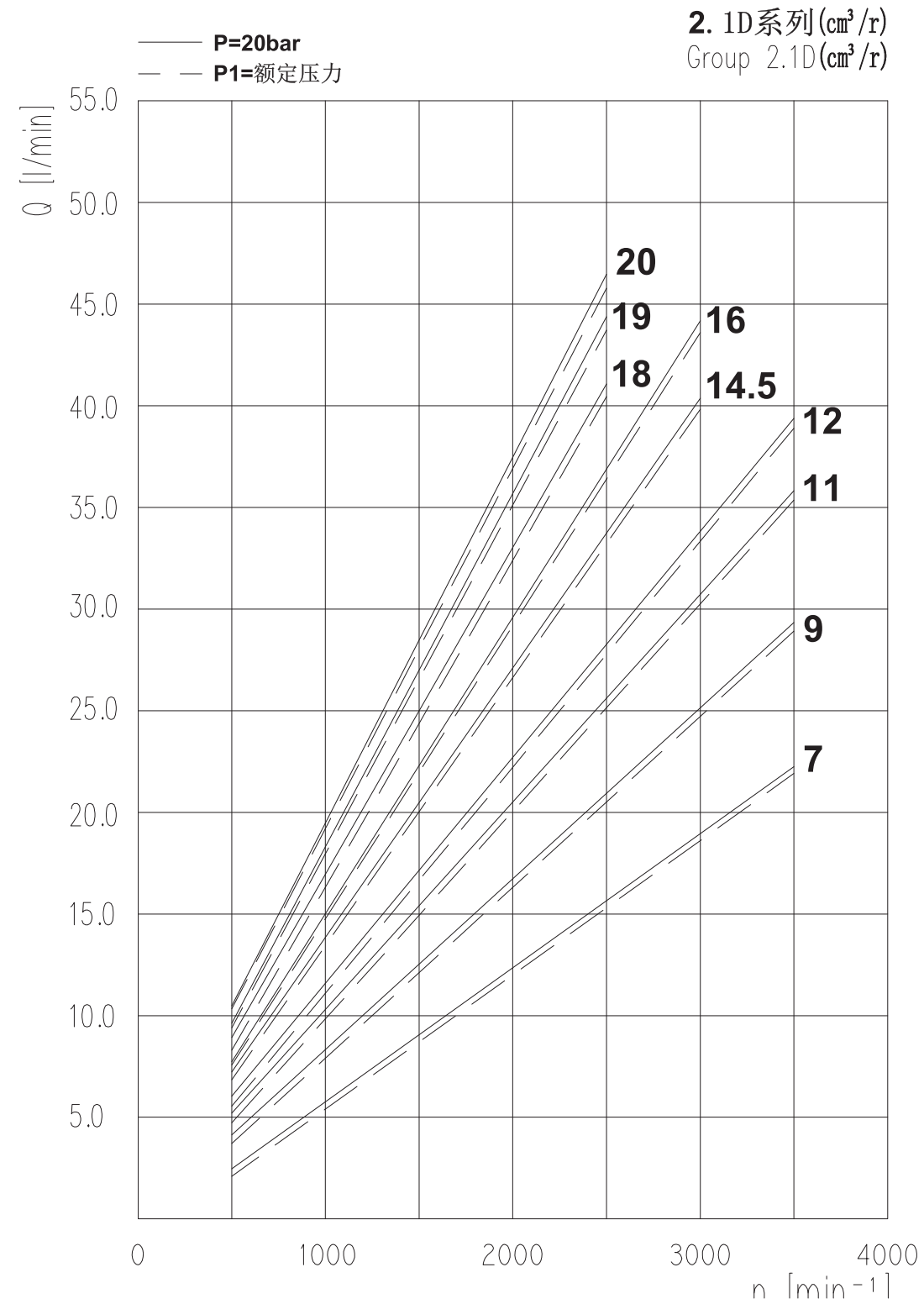


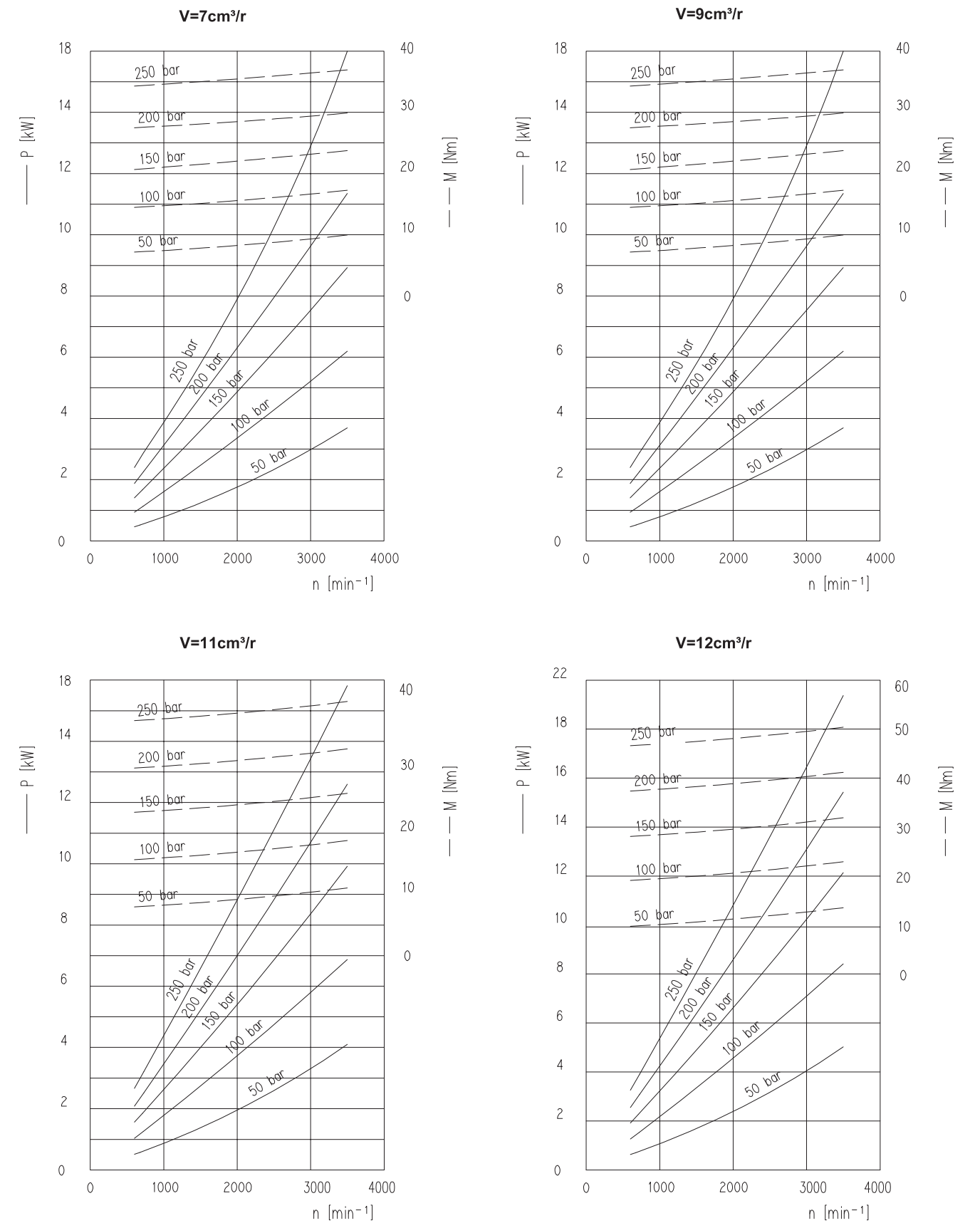
**2.1D**系列/Group 2.1D

2.1D系列流量性能曲线表/Group 2.1D Flow Performance Curve Table



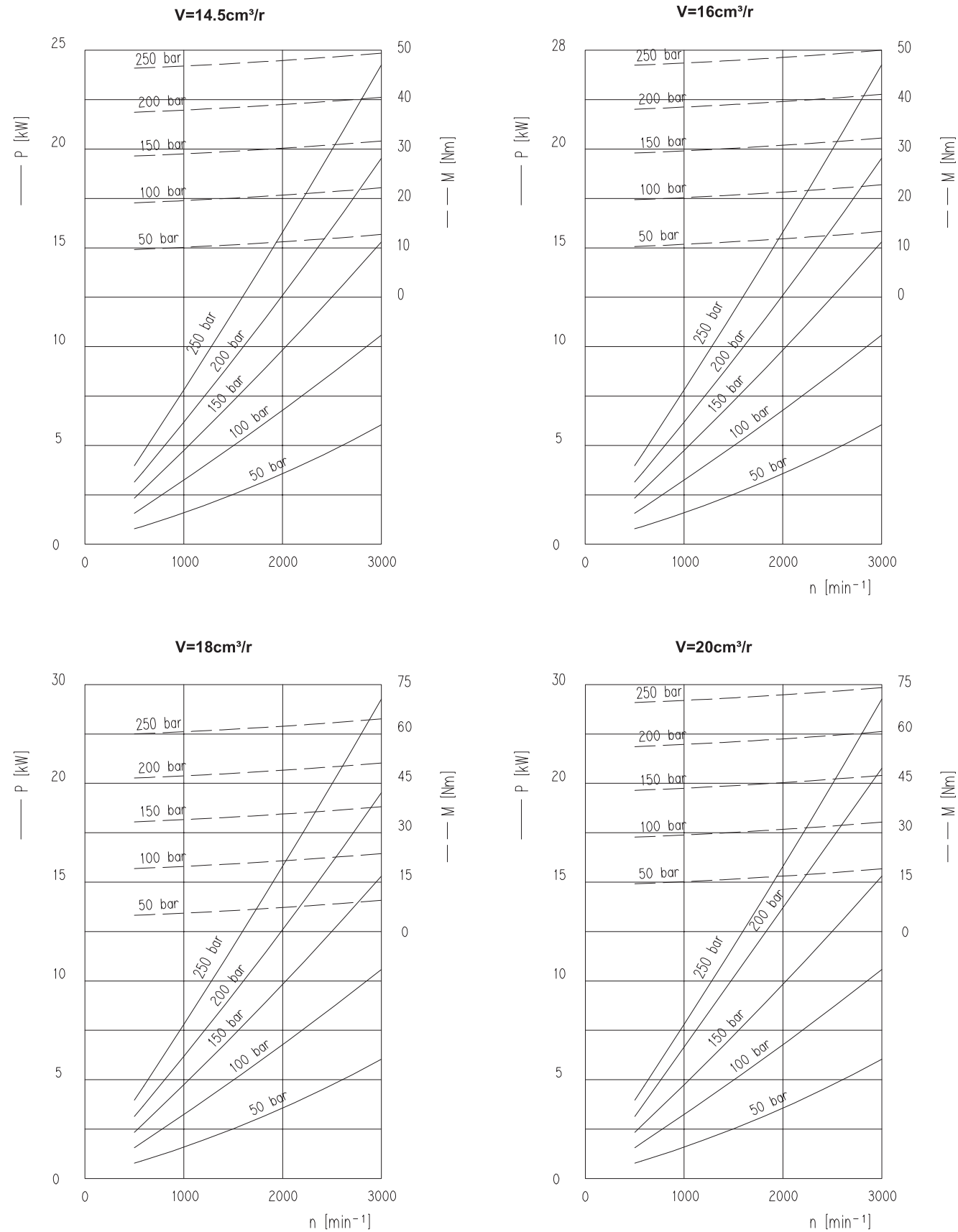
**2.1D**系列/Group 2.1D

2.1D系列功率性能曲线表/Group 2.1D Power Performance Curve Table



## 2.1D系列/Group 2.1D

2.1D系列功率性能曲线表/Group 2.1D Power Performance Curve Table



## 2.1D系列/Group 2.1D

2.1系列噪音曲线表/Group 2.1D Noise Curve Table

### 噪音曲线

噪音等级取决于转速和压力范围；这个压力范围介于10 bar和压力值 P1之间。

The noise level depends on the speed and pressure range; This pressure range is between 10 bar and pressure value P1.

油液数据:  $v = 32 \text{ mm}^2/\text{s}$ ,  $\theta = 50^\circ\text{C}$ .

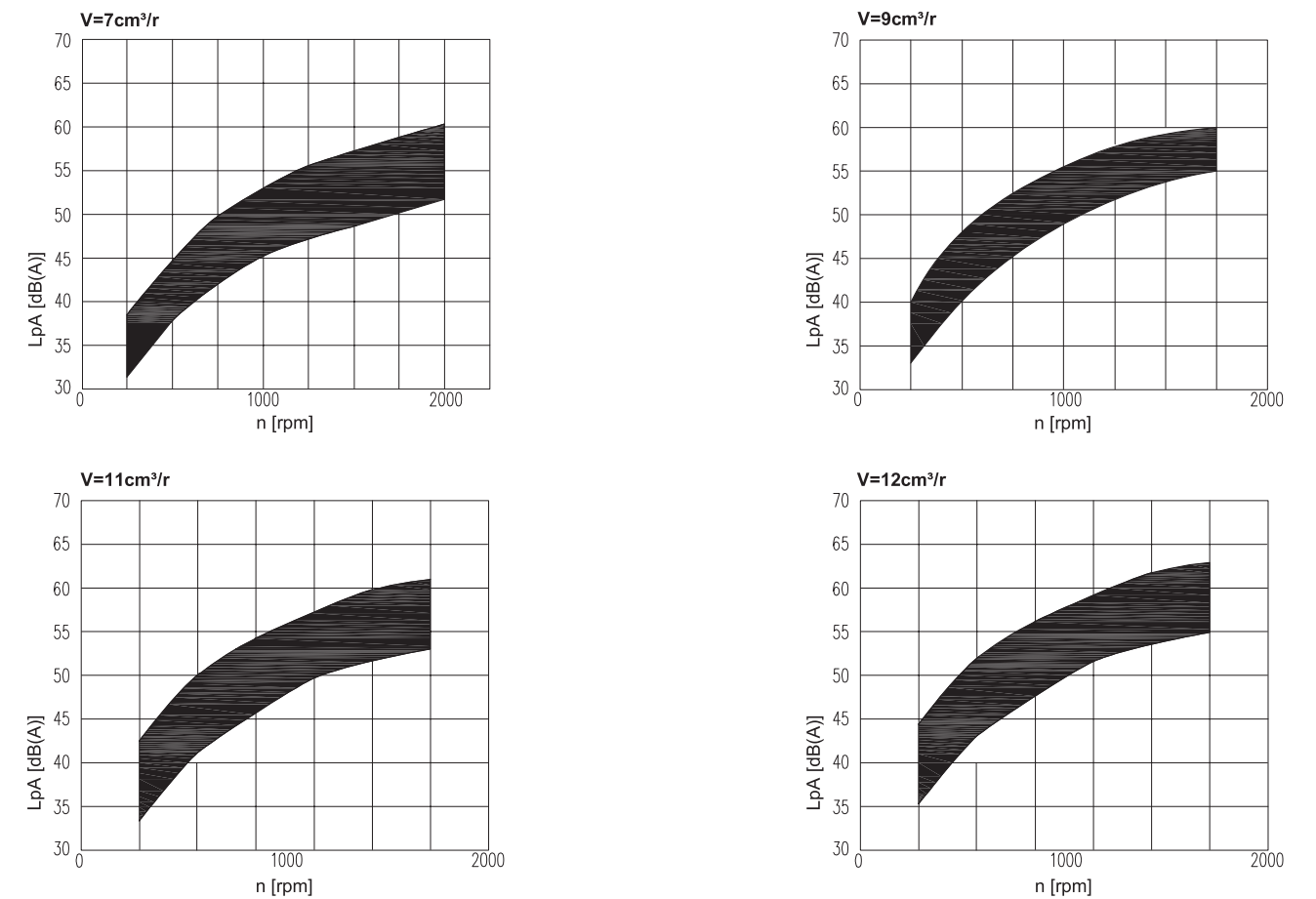
Oil data:  $V = 32 \text{ mm}^2/\text{s}$ ,  $\theta = 50^\circ\text{C}$ .

对于从吸声测量室测得的噪音值进行计算而得到的声音压力等级，符合 DIN 45635 第 26 章的要求。

The sound pressure level obtained by calculating the noise value measured from the sound absorption measuring room meets the requirements of Chapter 26 of DIN 45635.

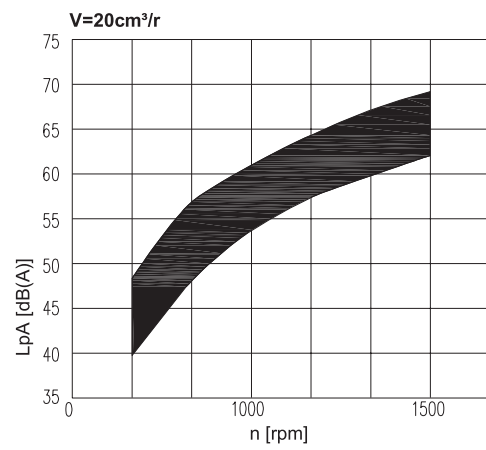
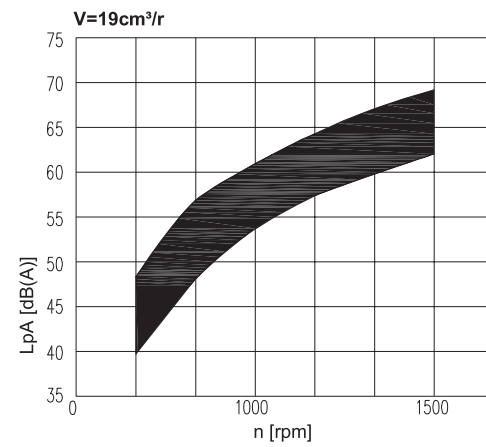
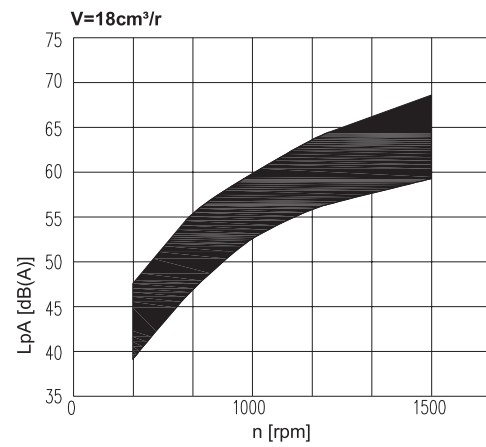
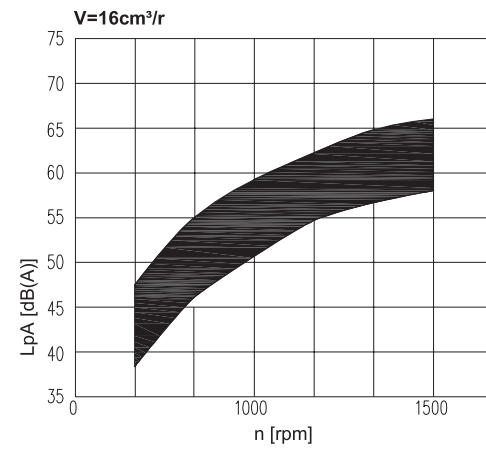
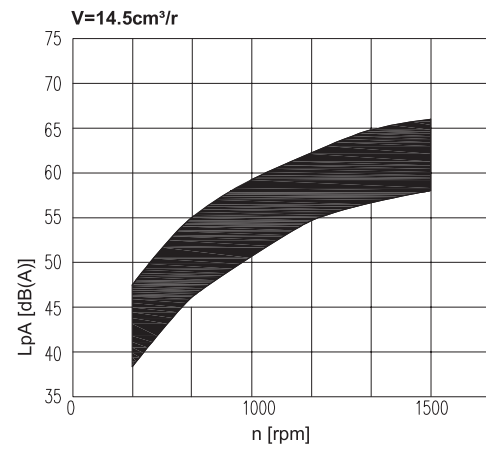
测量传感器与液压泵之间的距离: 1 米。

Distance between measuring sensor and hydraulic pump: 1m.



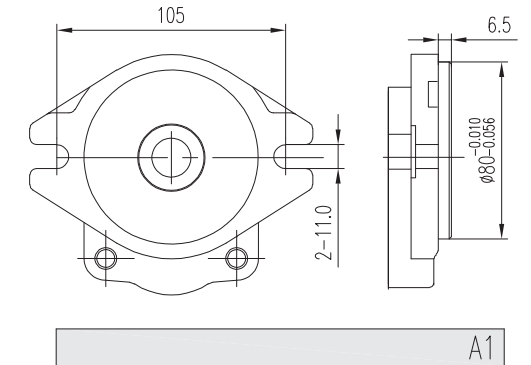
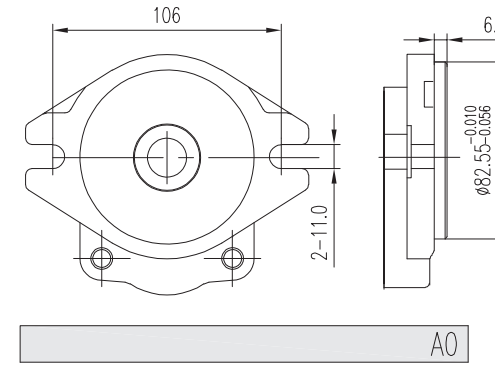
## 2.1D系列/Group 2.1D

2.1系列噪音曲线表/Group 2.1D Noise Curve Table

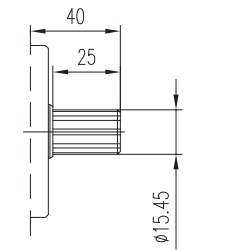


## 2.1D系列/Group 2.1D

前盖/FRONT COVER

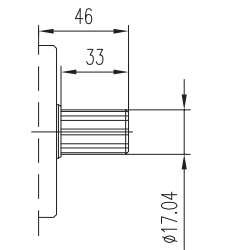


轴伸/SHAFTS



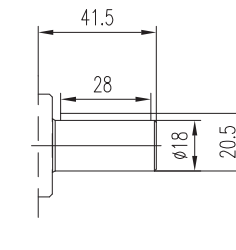
DP16/32-30'-9T  
S0

最大扭矩  
Max.Torque 185 Nm



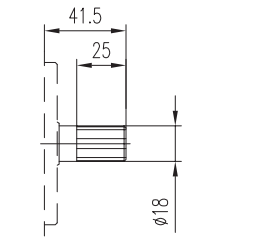
DP16/32-30'-10T  
S1

最大扭矩  
Max.Torque 200 Nm



6  
C0

最大扭矩  
Max.Torque 150 Nm



4-18x15x5  
H0

最大扭矩  
Max.Torque 200 Nm